

For a sustainable future

# ARITERM PELLET SYSTEM



■ PELLET BURNER KMP PX52



## ■ KMP PX52 - Pellet burner 50 kW

The KMP Pellet burner is developed and manufactured by KMP in Sweden. The PX52 pellet burner is designed for large houses, factory premises or similar. It meets all applicable European norms for certification (EN15270).

Design and choice of materials have been made with long service life and low operation costs in mind. Stainless, high temperature-resistant steel in critical parts.

### Effective combustion

Combustion is very effective with integral preheating of the combustion air resulting in clean flue gases and good economy.

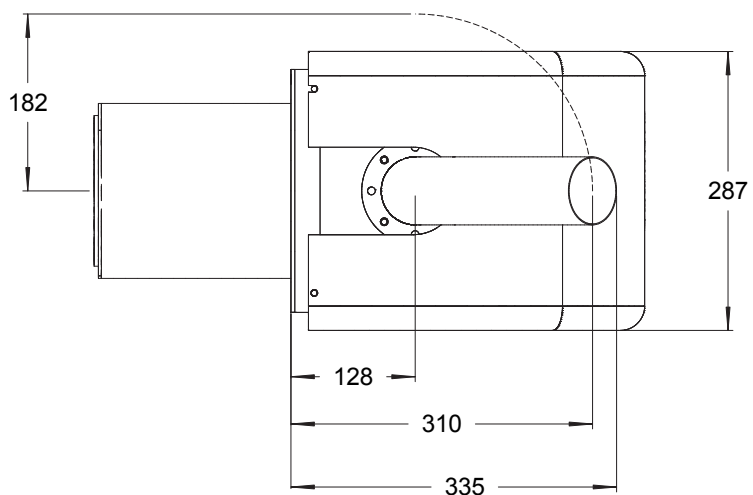
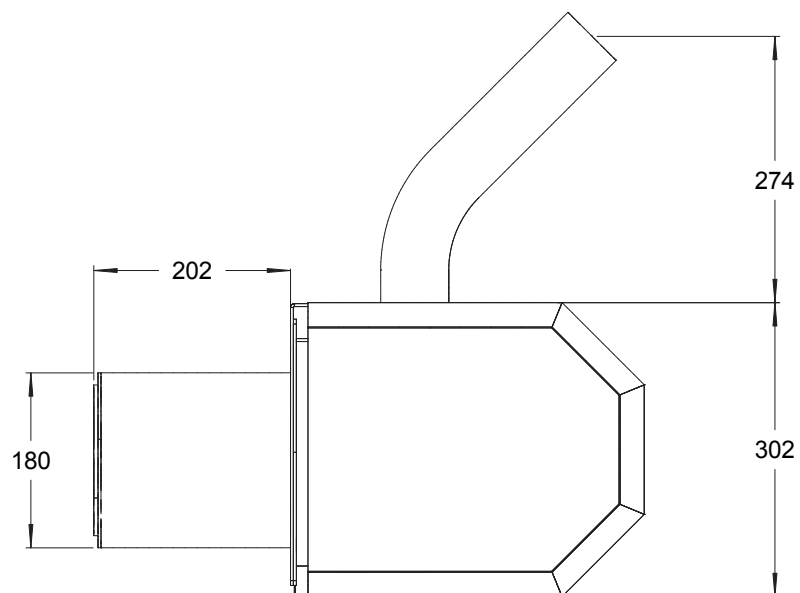
Controls with up-to-date electronics. The micro processor circuit board has all components and systems for an effective surveillance of the boiler. Electric ignition element is standard.

### Maximum safety and low installation cost

The burner is equipped with several independent safety features such as vertical feeder tube, thermal cut-out and flame sensor.

Installation cost is very low. Installation of the burner is simple and the horizontal flue tube design makes the burner easy to adapt for almost any type of boiler.





**Standard components:**

- Temperature sensor with cable
- Set of connection cables

**Accessories:**

- Pellet feeder Feedo
- Pellet hopper PF450
- Pellet hopper Depo



PX52		
Heat power "High"	kW	50
Heat power "Low"	kW	approx 20
Power consumption, average	W	50
Combustion efficiency	%	approx 95
Dimensions outside the boiler (w x h x d) mm	300x310x300	
Dimensions at hearth (Ø x l)	mm Ø180 x 200	
Mains connection	230 VAC	
Weight	kg	12



Example of an installation in a wood boiler.

The control panel has a display and adjustment dial:

- The display shows the operating mode and the current boiler temperature. Explanatory text scrolls through the display every 5 seconds.
- The adjustment dial is used by pressing or turning.
- Turn it to scroll through the menu or change the value when adjusting.
- Pushing once makes a selection or saves in the menu.

